



Localscapes University





WEBER BASIN WATER
**LEARNING
GARDEN**

Class Feedback



Monthly Newsletter







Utah is a Desert



SUMMER



WINTER





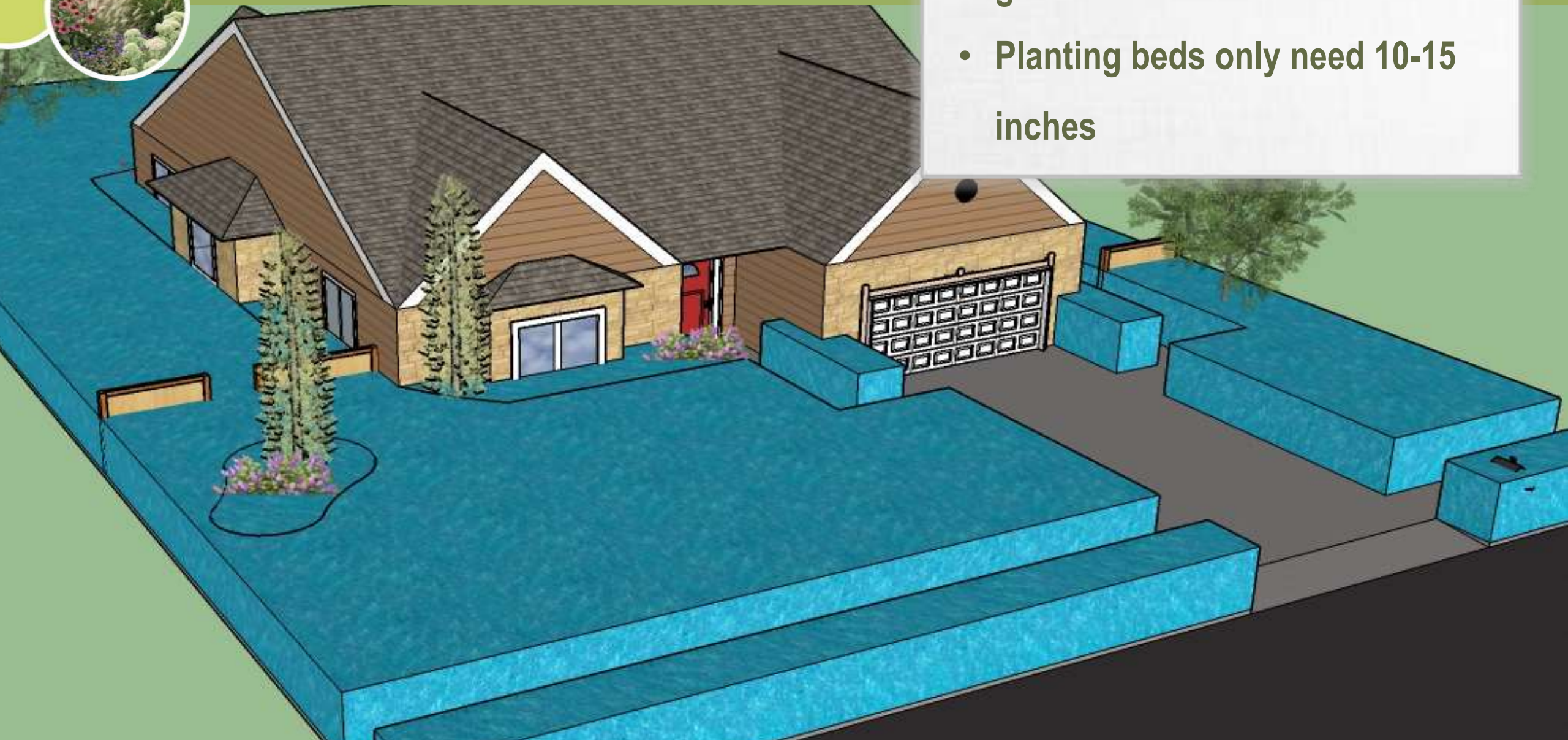
Traditional Utah Landscape

- .27 Acres
- 90% Lawn
- 40 inches of water per season



Why Does It Matter?

- 40 inches per year = 176,250 gallons
- Planting beds only need 10-15 inches



Utah Localscape

- 20% Lawn
- Lawn and Planting Beds are watered separately
- Lawn is a designed element



Utah Localscape

- Utah Localscape = 64,766 gal/year
- Annual water savings of 110,000 gallons!



Localscapes



Designed for Utah



Water Efficient



Lower Maintenance

Improved Functionality



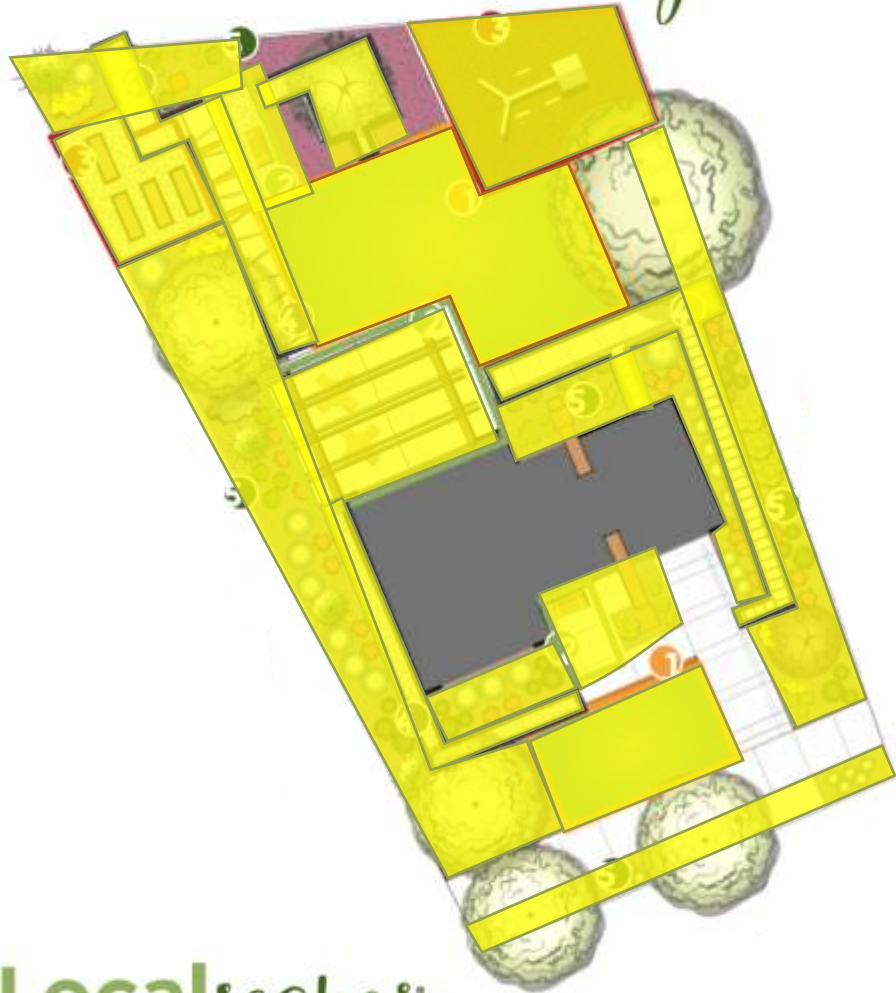
Better Curb Appeal



Simplified Irrigation



5 elements of a Localscape



Localscapes
Localscapes.com

Follow these steps to start your own plan:





Localscapes University

Central Open Shape





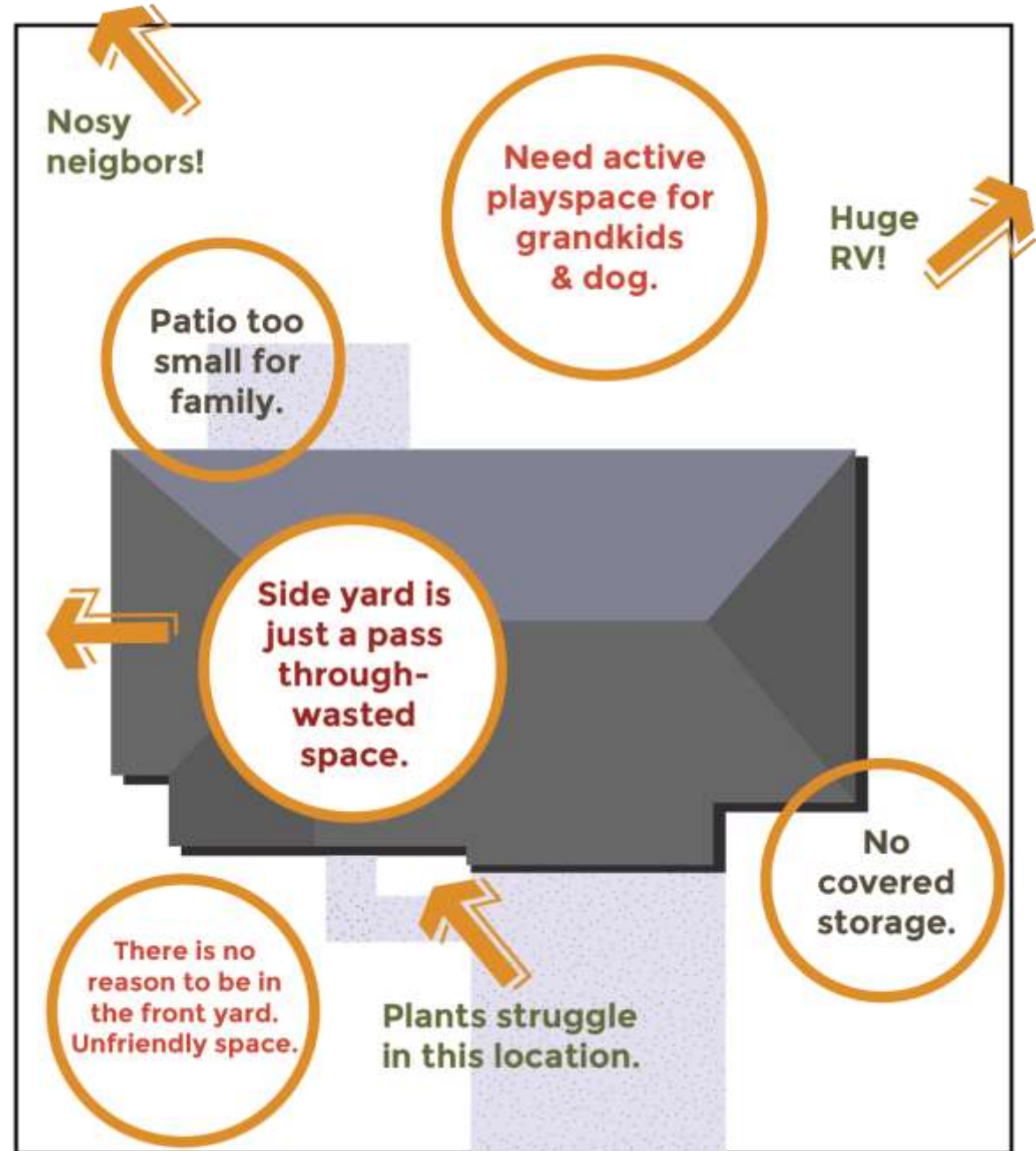
Central Open
Shape





Needs Assessment

Start by identifying the location of your Central Open Shape



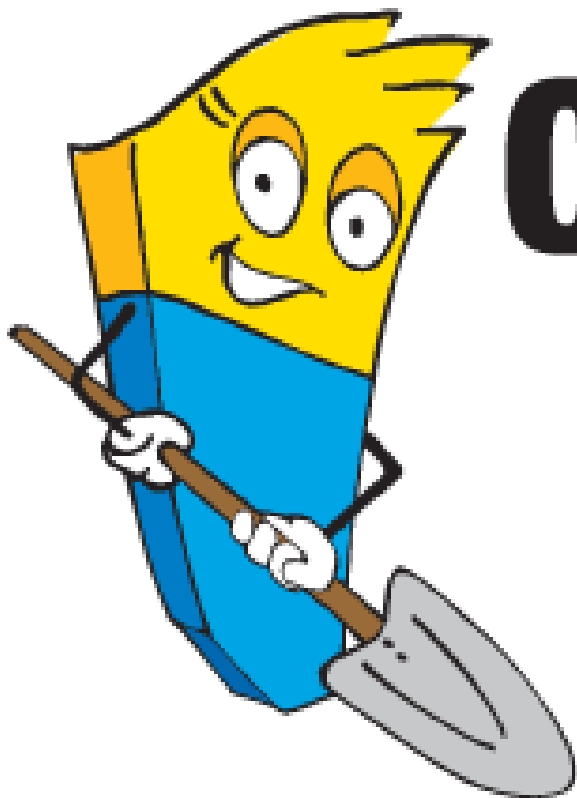


FREE utility line location service

Know what's below.



Call 811 before you dig.



BLUE STAKES OF UTAH
UTILITY NOTIFICATION CENTER, INC.

www.bluestakes.org

1-800-662-4111



Check for Easements

Use your County Assessor's website to check for easements on your property. Some easements can prohibit you from installing certain features into your landscape.

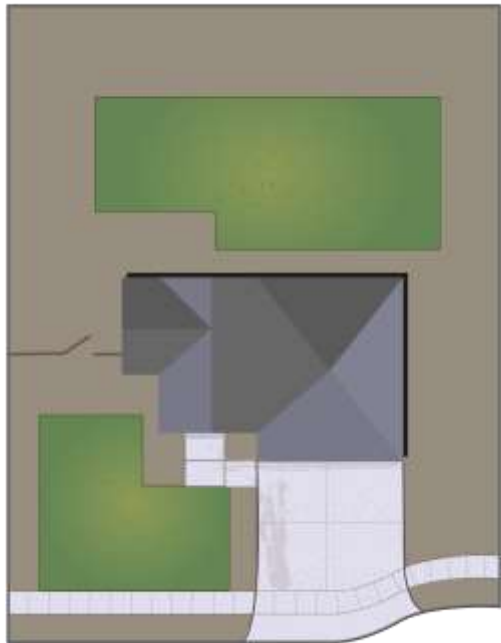


Central Open Shape Locations

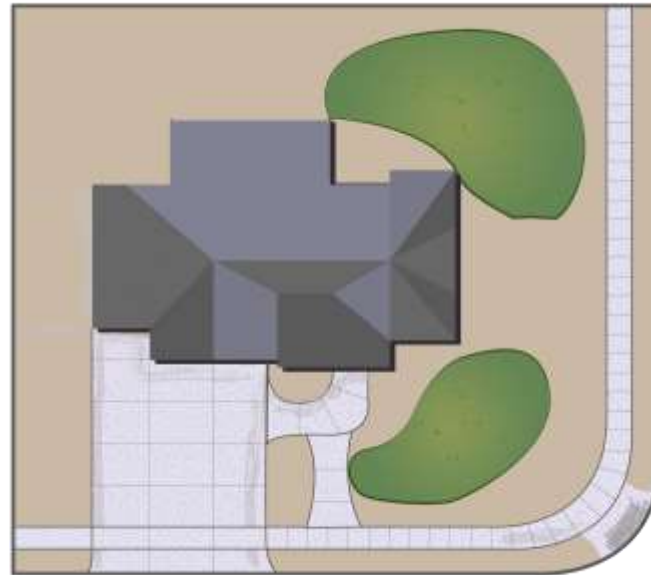
Central
Open
Shape

1

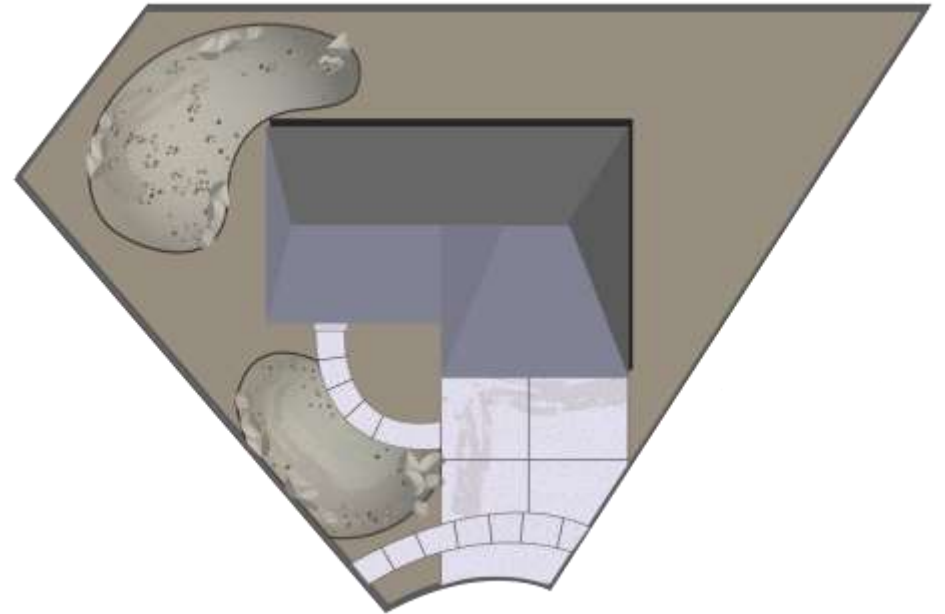
Rectangular Lot



Corner Lot



Irregular Lot



Location Considerations

Central
Open
Shape

1

- Flat open area
- Room to recreate
- Sun exposure
- Aesthetics



Contrasting and Permanent Materials

Central
Open
Shape

1



*Real results
from past class
participants



Defined Edge

Central
Open
Shape

1

*Real results
from past class
participants



Central Open Shape Materials- Hardscape



Flagstone



Pavers



Gravel



Chat

Hardscape Materials- Pavers

Central
Open
Shape

1

Large enough to
make a bold
statement & anchor
the design



Hardscape Materials- Inorganic mulch



Use 4-6 inches of
compacted
inorganic mulch

Central Open Shape Materials- Living



Thyme



Sedge



Veronica



Lawn

Living Materials- Groundcover

Central
Open
Shape

1

Creeping
Thyme
Sun



Turkish
Veronica
Part-Shade



Living Materials- Lawn

Central
Open
Shape

1

Lawn is a
designed
element



Lawn Varieties- Cool Season

Central
Open
Shape

1

Bluegrass



Fine Fescue
Mix



Dwarf Tall
Fescue



Lawn Varieties- Warm Season

Central
Open
Shape

1

Buffalo
Grass



Blue
Grama



Lawn Varieties- Eco-lawns

Central
Open
Shape

1

Yarrow
Mix



Clover
Lawn



Highly Efficient Shapes

Squares &
rectangles
are most
efficient



Ovals &
gentle curves
are ok too

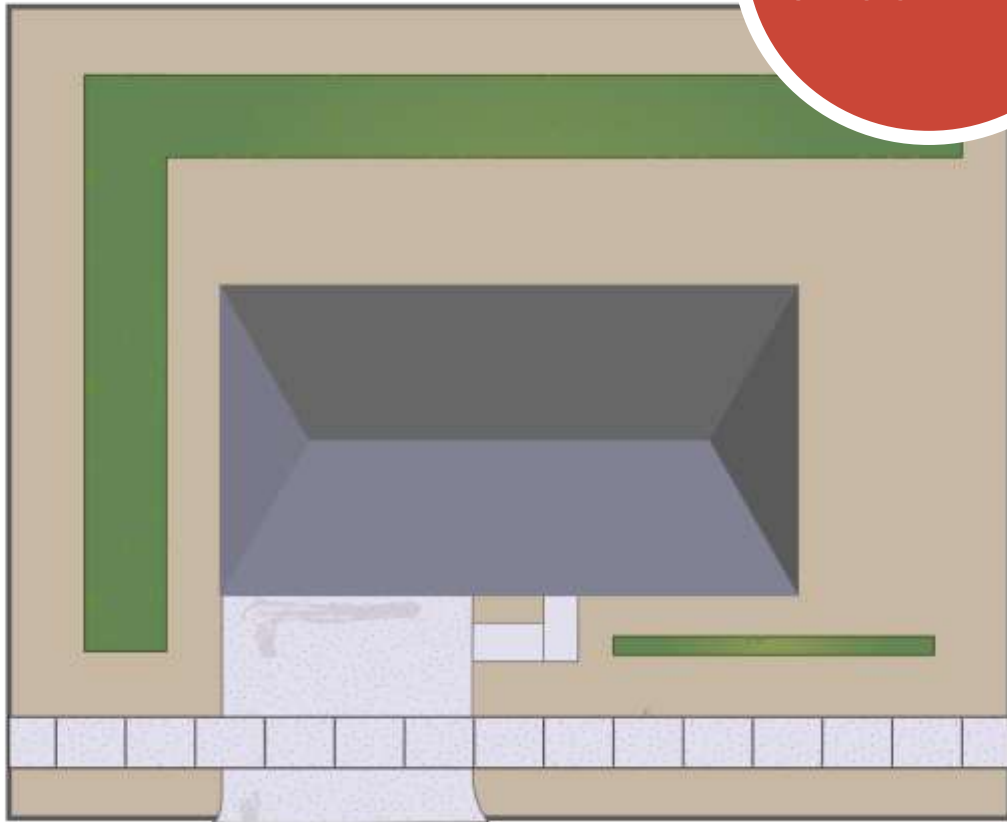


Lawn Shapes to Avoid

Central
Open
Shape

1

Less than
8 feet wide



Corners
less than
90°



Lawn is not less than 8 feet wide



Lawn should be unobstructed



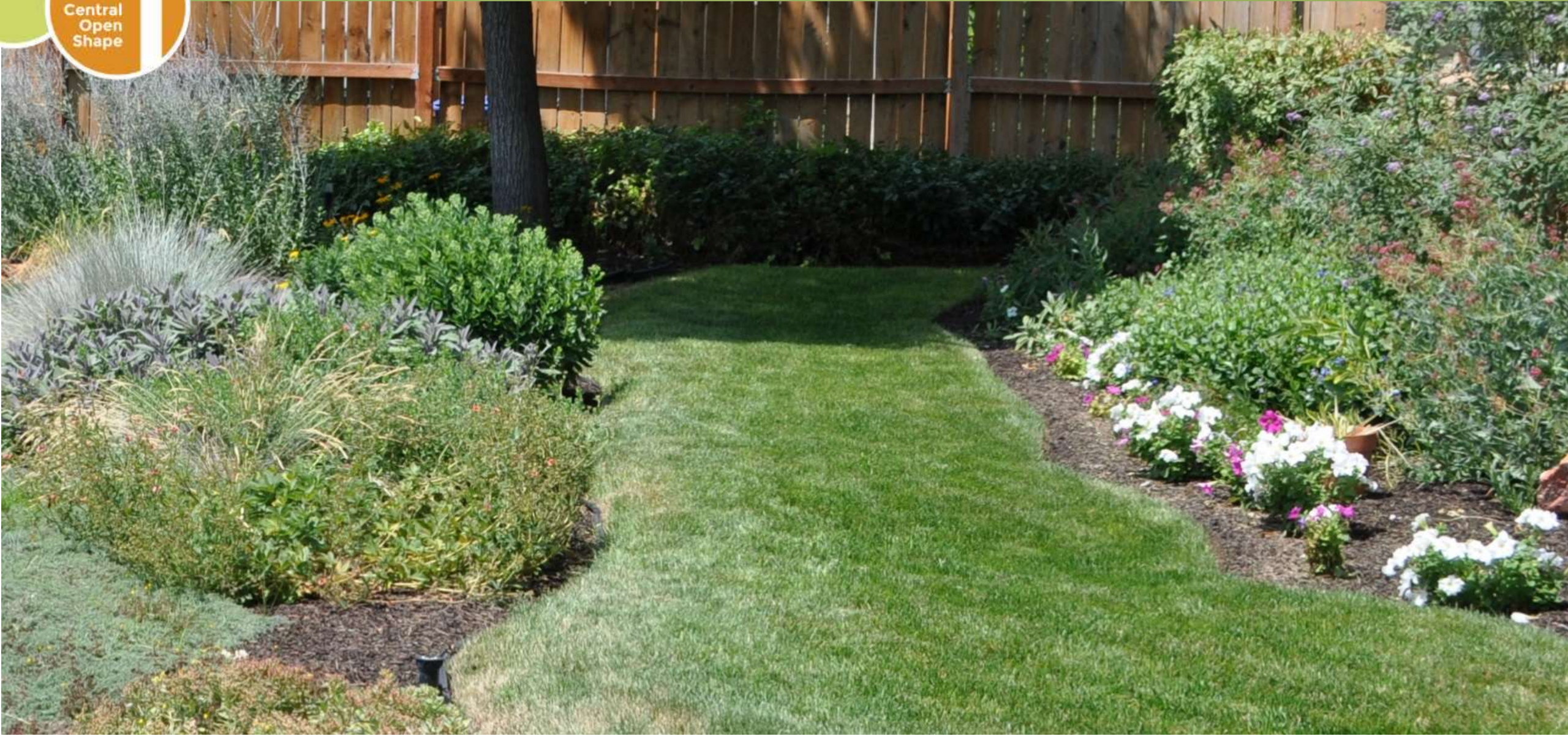
Lawn cannot be obstructed

Central
Open
Shape

1



Lawn is not a designated path



No lawn on slopes or hillsides

Central
Open
Shape

1



No lawn on slopes or hillsides



Limit lawn to 35% or less



Use One Type of Head Per Zone

Central
Open
Shape

1



Rotary Nozzles Recommended

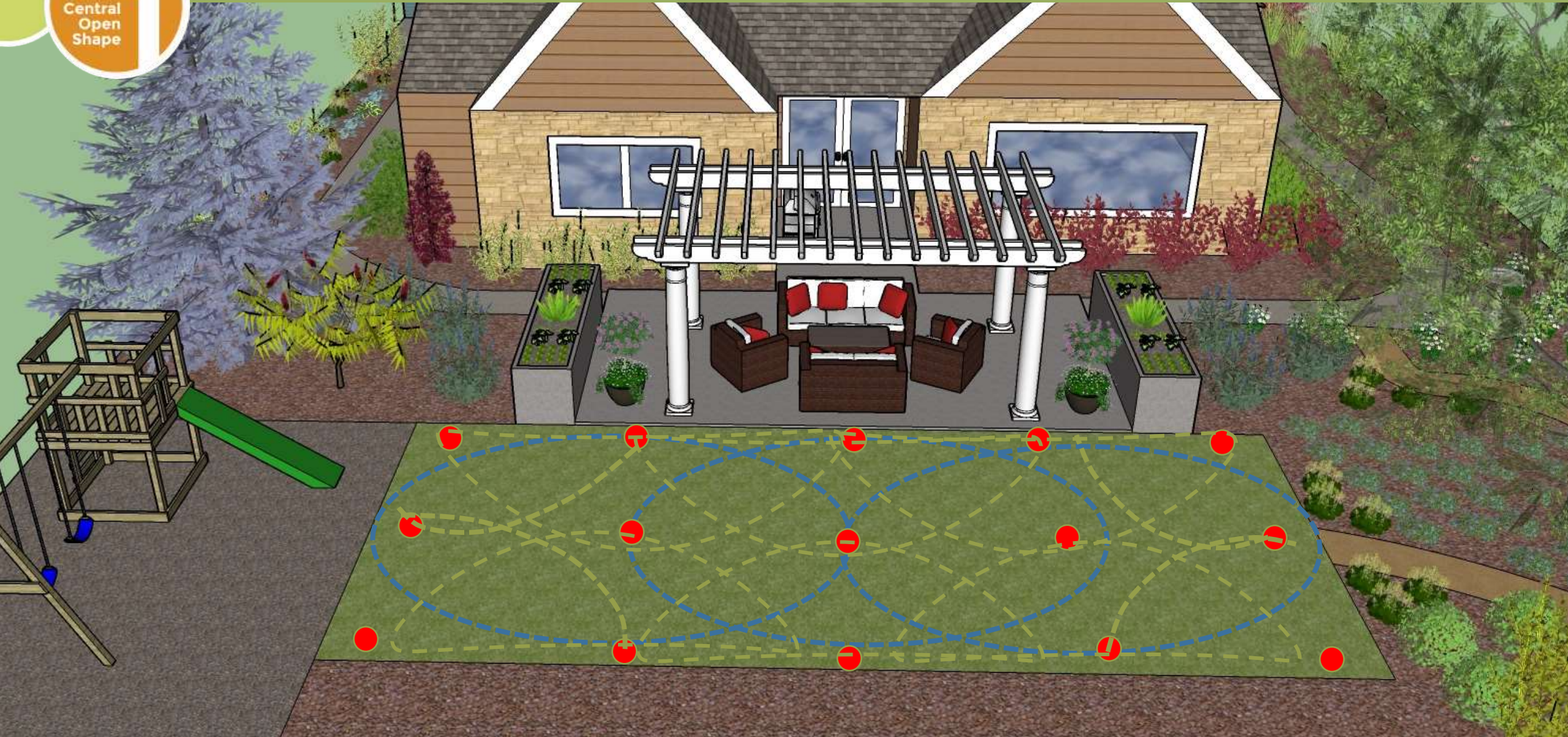
Best
Practice

Less water is lost to
evaporation and wind
when rotary nozzles
are used



Head-To-Head Coverage

Central Open Shape



Lawn considerations



Lawn considerations

Central
Open
Shape

1



BEFORE



AFTER

Typical Utah Landscape



Lawn as a path

Lawn in the
park strip

Odd bits of
lawn

Typical Utah Landscape

Central
Open
Shape

1



Completed Central Open Shape



Completed Localscape



Lawn Removal

Step 1:

Mark the lawn area to be removed

Marking
Paint



Garden
Hose



Step 2:

Kill the existing lawn

- The lawn must be dead down to the roots
- If the roots are still alive the lawn will grow back
- This process can take several weeks

Plastic
Sheeting



Chemical



Lawn removal

Step 3: Remove Dead Lawn

Sod Cutter



Tiller



Shovel



Irrigation Placement

Central
Open
Shape





Questions?



Localscapes University

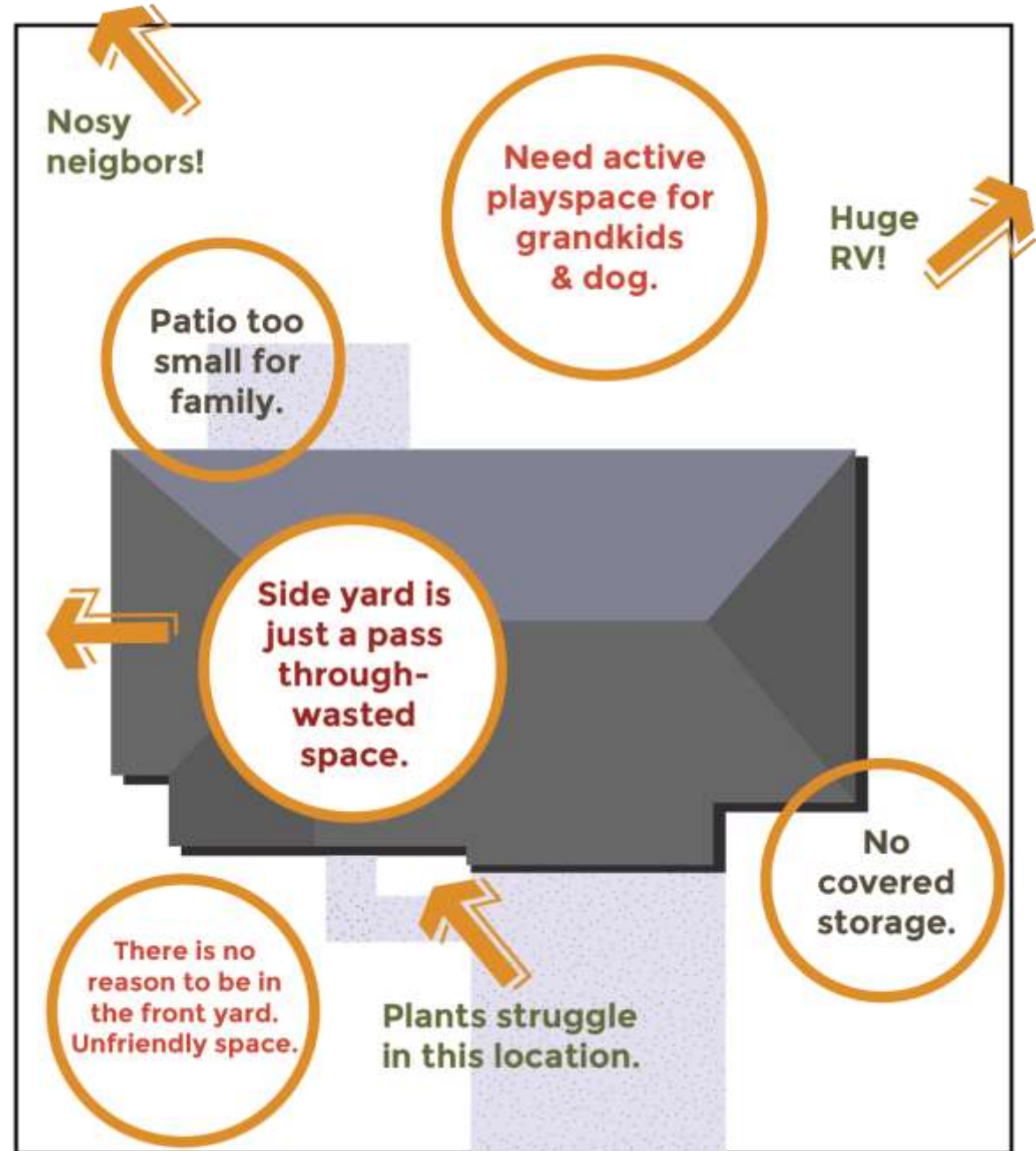
Gathering Areas,
Activity Zones & Paths





Needs Assessment

How do you want to enjoy the remaining areas of your landscape?

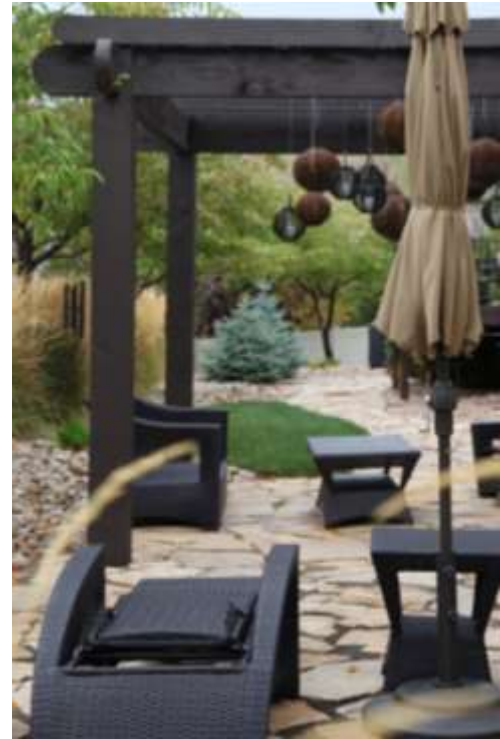
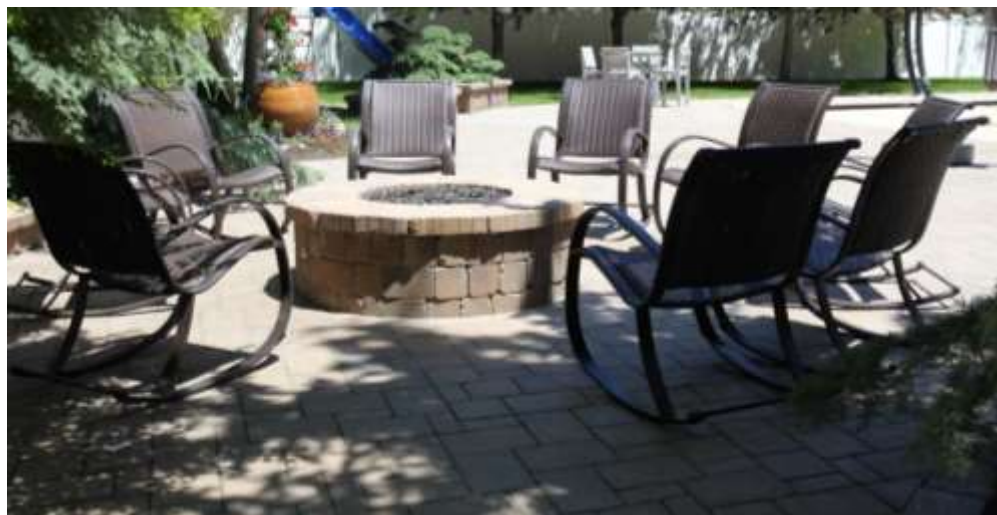


Completed Central Open Shape





Gathering
Areas



Gathering Areas

Special spaces
designed for relaxation
or socializing



Types of Gathering Areas

- Patios
- Informal seating areas
- Pergolas
- Decks
- Gazebos
- Fire pits



Types of Gathering Areas



Location Considerations

- Purpose
- Sun exposure
- Trees in the area
- Privacy
- Noise



Location Considerations



Location Ideas

Gathering
Areas

2

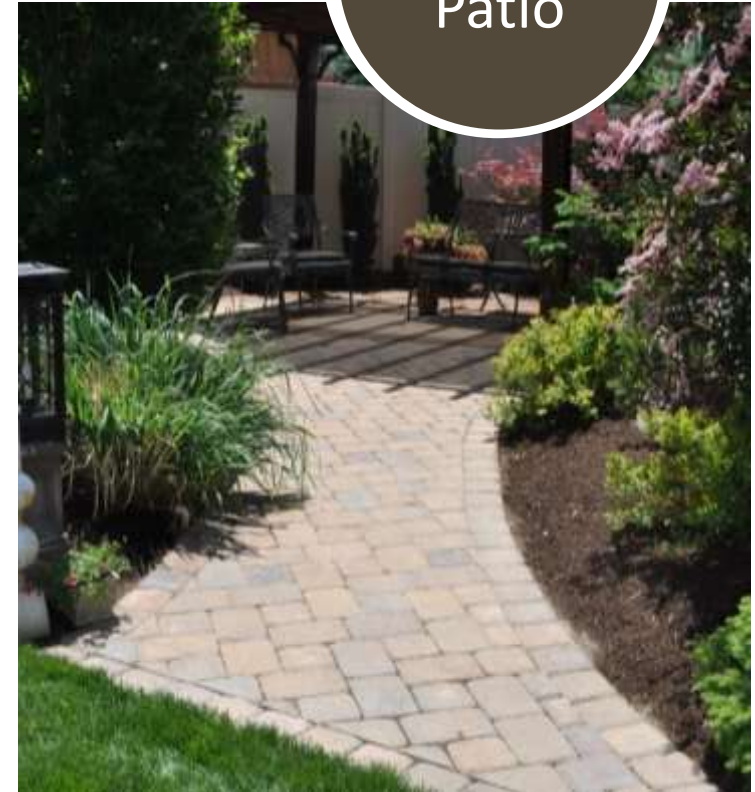
Front
Yard



Main
Patio



Bonus
Patio



Material Considerations

- DIY vs. contractor installation
- Usage frequency
- Availability
- Budget



Gathering Area Materials





Aggregate Calculator

US Aggregates > Aggregate Calculator

Length *

feet

Width *

feet

Depth *

inches

Aggregate

Estimated Tons Needed

Click the button below for exact quantity, type of material, and cost (including delivery).

Gathering Areas

Private
Seating
Area



Patio





Activity Zones



Types of Activity Zones

- Vegetable gardens
- Children's play area
- Storage
- Sport courts
- Trampoline
- Hot tub
- Dog run
- Other active recreation areas



Location Considerations

- Sun exposure
- Space requirements
- Attractiveness
- Purpose
- Need for monitoring activity from indoors
- Budget



Location Considerations



Activity zone considerations

Localscapes
Localscapes.com





Designated
Activity Zones
reduce
maintenance



Design the
space to fit the
desired Activity
Zone



Sand



Gravel



Bark Mulch

Activity Zone Surface Materials:



Vegetable Garden Watering

Best
Practice

Water gardens
with drip
irrigation on their
own valve



Vegetable Garden Watering



Adaptability



Children's play space is easily converted to a Gathering Area



Localscapes Requirement

Activity Zones
cannot function
as the Central
Open Shape



Back Yard Activity Zones

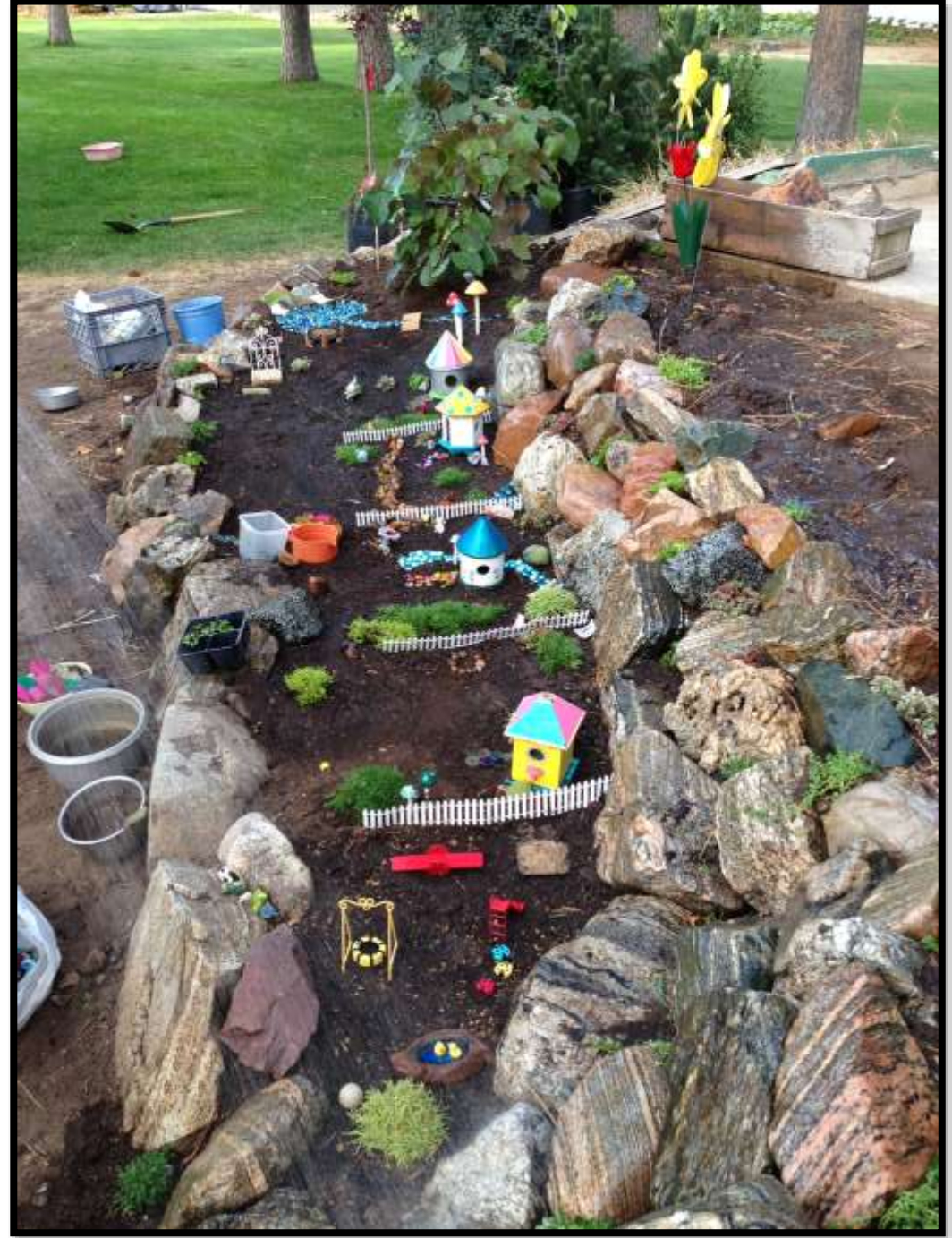


Children's play area:
playground bark surfacing

Vegetable garden:
raised beds on bark mulch



Localscapes
Localscapes.com



Localscapes
Localscapes.com





Localscapes
Localscapes.com



Localscapes
Localscapes.com







Paths



Paths

4 Paths

Paths connect
landscape elements
and allow for easier
navigation



Path Locations

4 Paths



Primary and Secondary Paths

Primary Path



Secondary Path

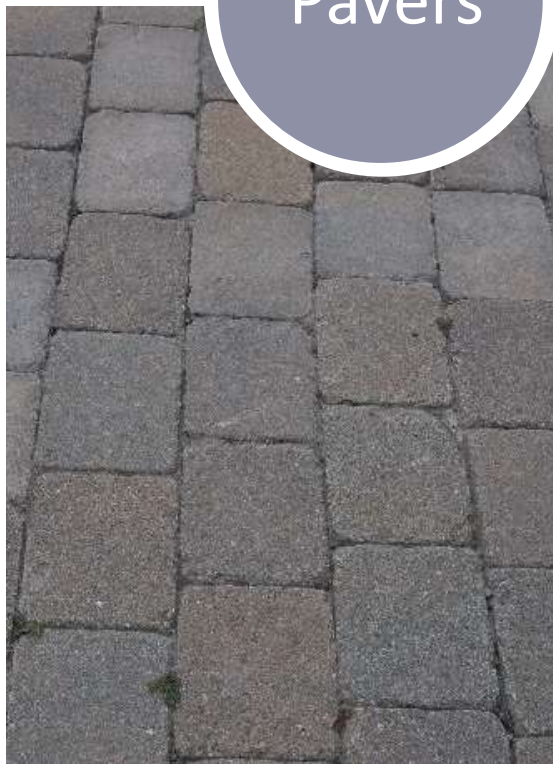


Primary Path Materials

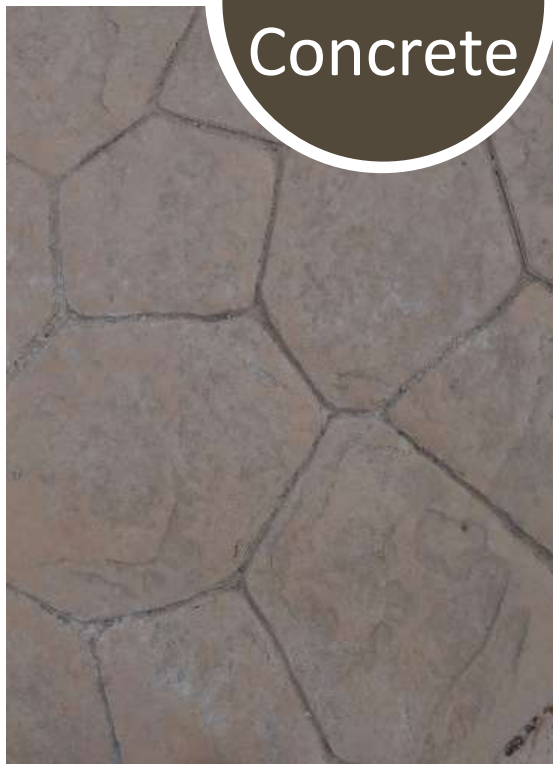
Concrete



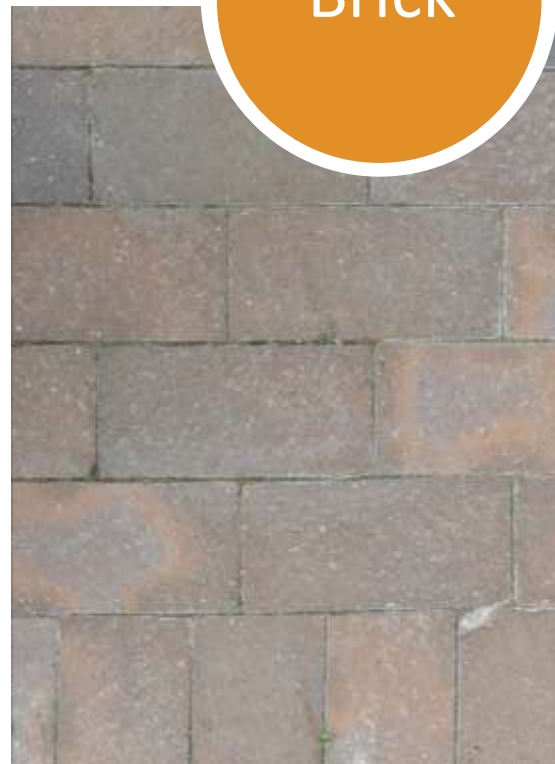
Pavers



Stamped
Concrete



Brick

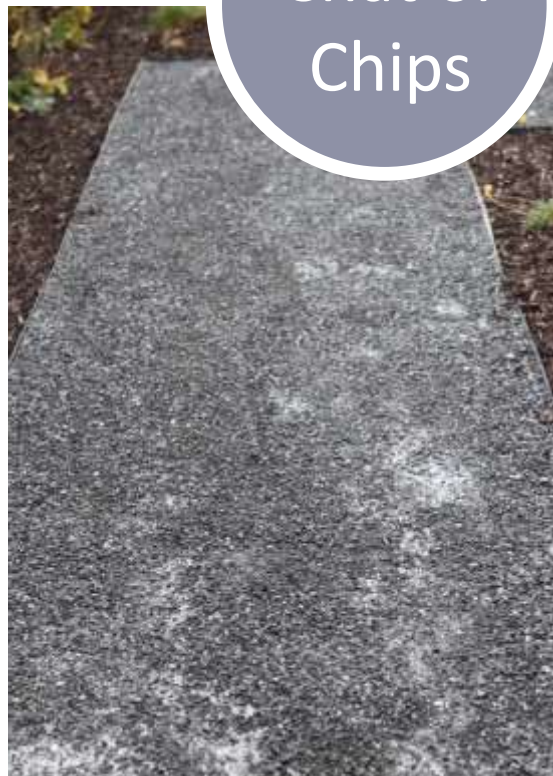


Secondary Path Materials

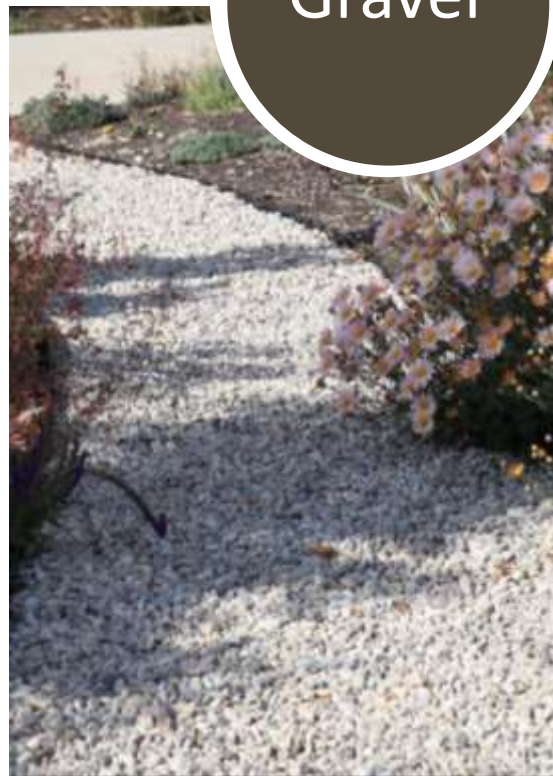
Bark



Chat or Chips



Gravel



Flagstone



Paths

4 Paths



Path Installation

4 Paths

Top Layer
2-3" of gravel,
chip, chat or
mulch

Top

Base
Landscape
fabric/weed barrier
fabric

Base



Soil
Removal
Remove
existing soil

Prep



Edge
Metal edging to
contain gravel

Edge

Back Yard Paths



Edging

Best
Practice

Edging is a nice way
to separate special
use zones
throughout the
landscape





Questions?



Localscapes University

Planting Beds





Planting Beds



Planting Beds



Building Planting Beds

5
Planting
Beds



1. Install Drip
irrigation

2. Add plants to
fill at least 50% at
maturity

3. Add 3-4
Inches of mulch

Step One-Install Drip Irrigation



Drip Irrigation Overview

- Allows water to flow slowly to plant roots
- Very little water is wasted from evaporation or wind
- Helps with weed control
- Easier to install and change



Drip Irrigation Types

In-Line
Drip



Point
Source
Drip



Localscapes Requirement- Eligible Emitters



Localscapes Requirement-Ineligible Emitters



Drip Irrigation Considerations

Choose drip irrigation that supports your plant density preference



LOW



MEDIUM



HIGH

Filter/Pressure Regulator

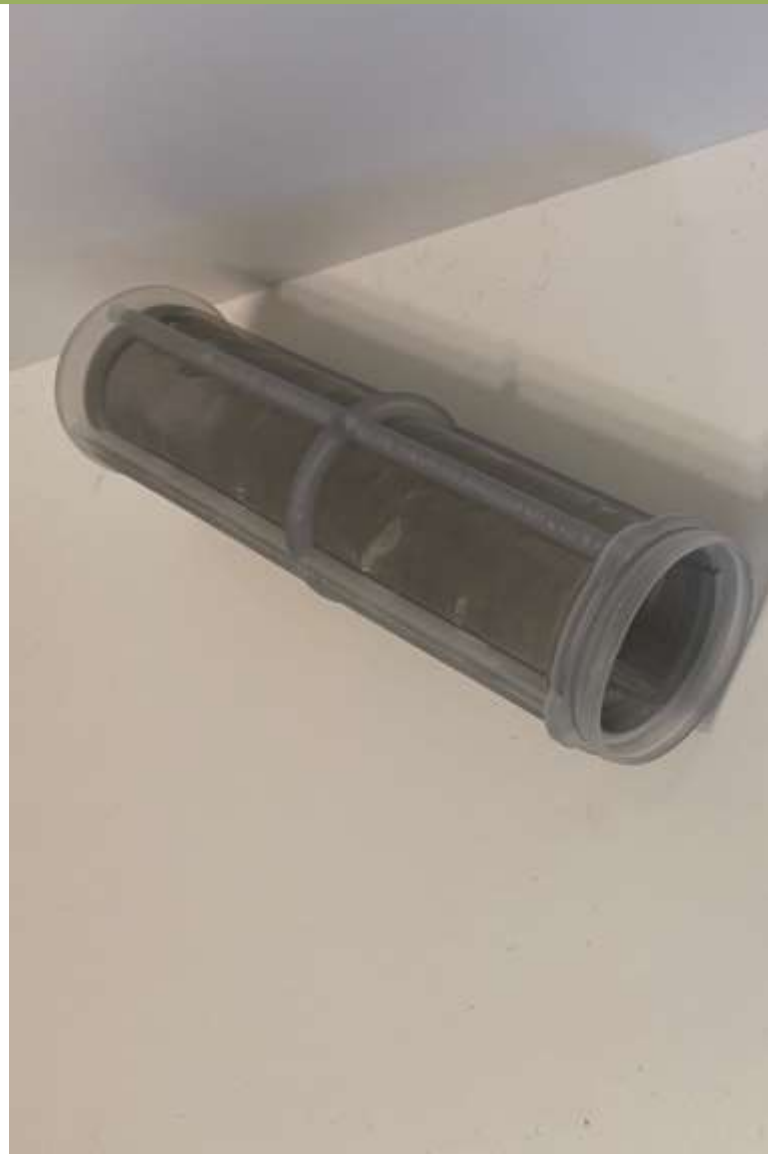
Filter



Pressure
Regulator

Filter/Pressure Regulator

5 Planting Beds



Inline Drip Irrigation Materials



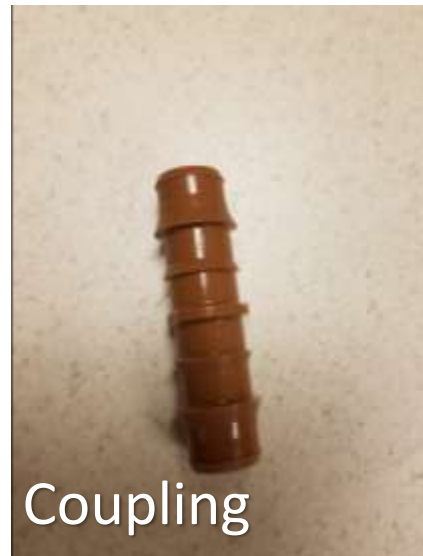
Blank Tubing



Drip Tubing



Tee



Coupling



Elbow



Staple

Inline Drip Irrigation

- Drip emitters are built directly into the lines
- Water planting beds evenly
- Installed on the surface, or just beneath the soil, under a layer of mulch
- Easy maintenance



Inline Drip Irrigation

To ensure trees get plenty of water, loop multiple inline drip rings around the trunk.



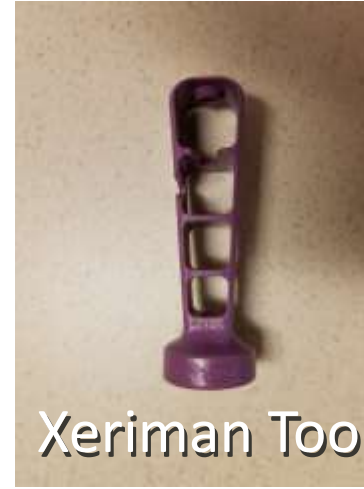
Point Source Drip Irrigation Materials



Blank Tubing



Poly
Tubing



Xeriman Tool



Drip Emitter



Tubing Stake



Staple

Point Source Drip Irrigation

- Drip emitters are attached to the main line with spaghetti tubing
- Emitter waters individual plants
- Installed on the surface of the soil under a layer of mulch
- Best for maximum weed control



Point Source Drip Irrigation

- Ensure that you have at least 10-15 gallons of water per hour to each tree
- More emitters will have to be added as plants mature
- Trees take the longest to establish their root system so be sure to periodically give them extra water during the first two years



Drip Using Secondary Water



Figure Eight Line End- Closed



Secondary Irrigation Filter



Figure Eight Line End- Open for Line Flushing

Step Two-Add plants

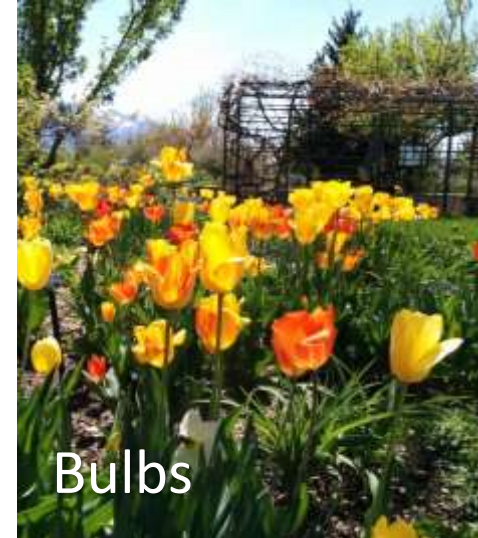


Localscapes Requirement

- Plants must fill at least 35% of the planting bed at maturity. Can be up to 50% if you desire



Plant Materials



Know your plants

5 Planting Beds

Where to look:

- www.conservationgardenpark.org
- Local Nurseries
- Check all plant tags before you buy a plant

What to look for:

- Size
- Light requirements
- Perennial vs. annual
- Hardiness zone
- Botanical name



Buy plants by botanical name, not the common name.

- Provide shade
- Block unwanted views
- Provide multi-season interest
- Can act as a focal point

Weeping
White Spruce

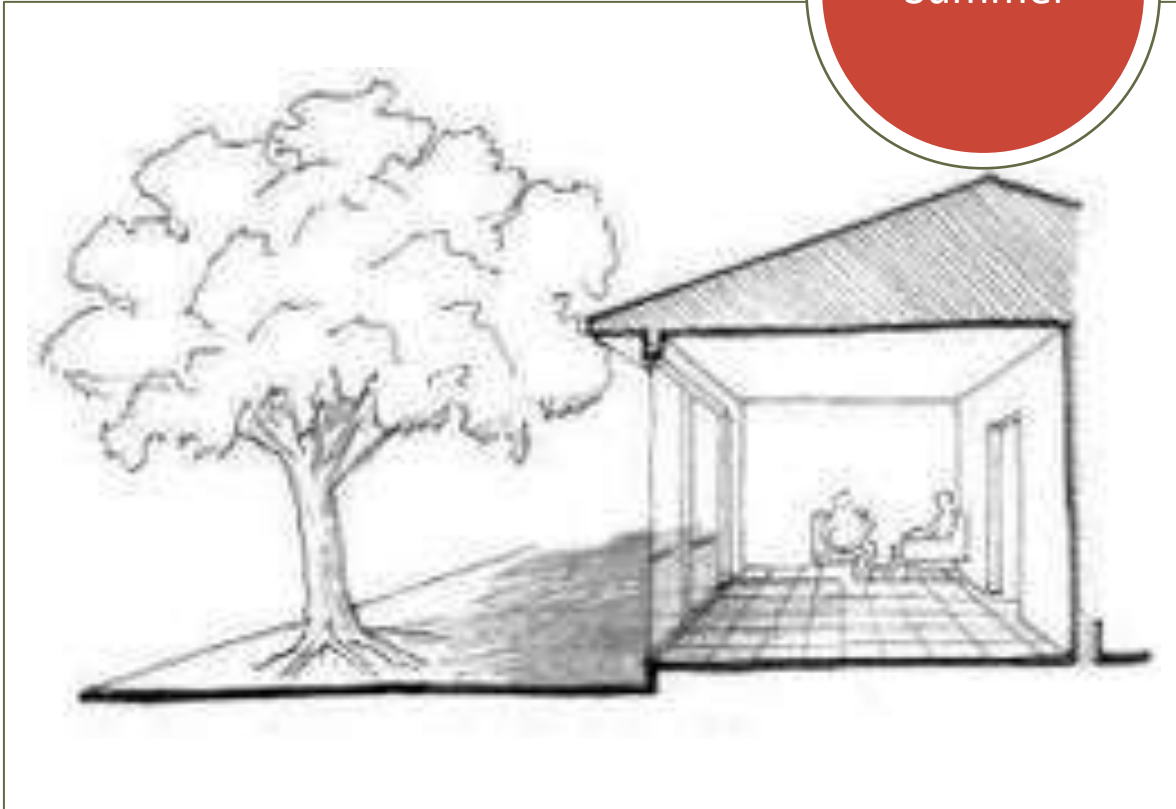


'Green Vase'
Zelkova

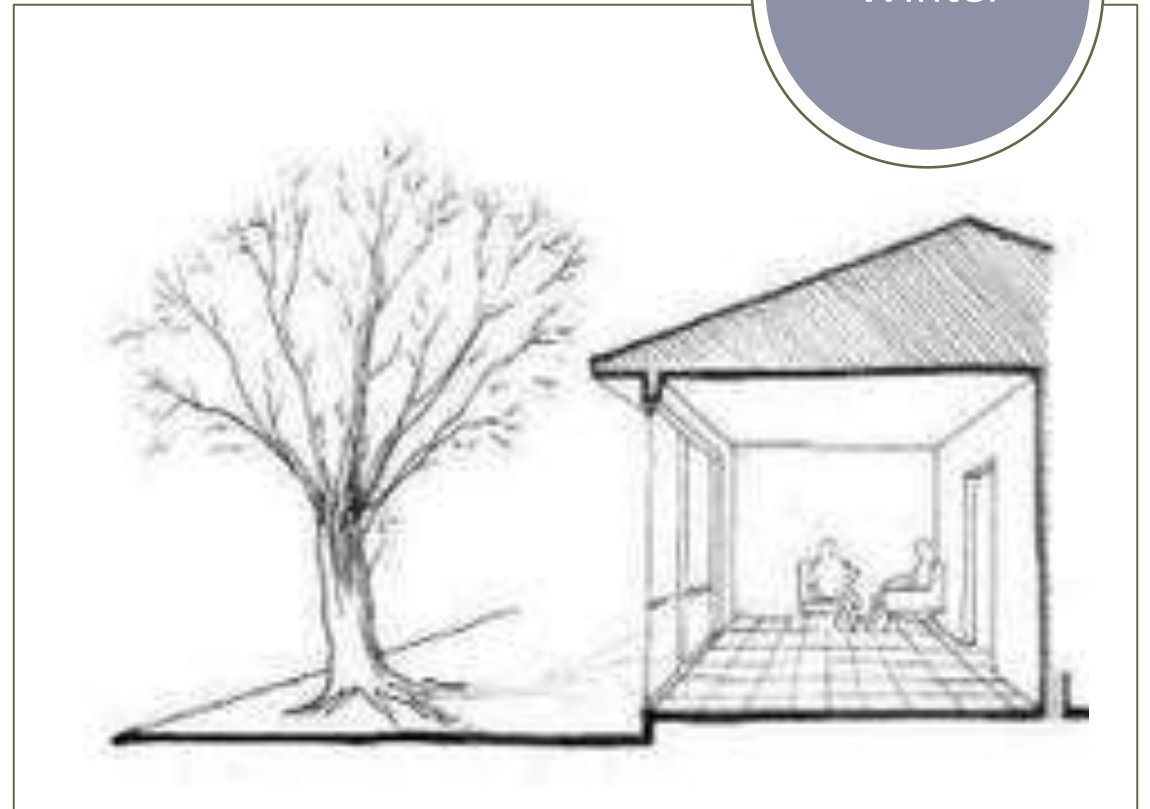


Tree Location- Energy Efficiency

Summer



Winter



Shade

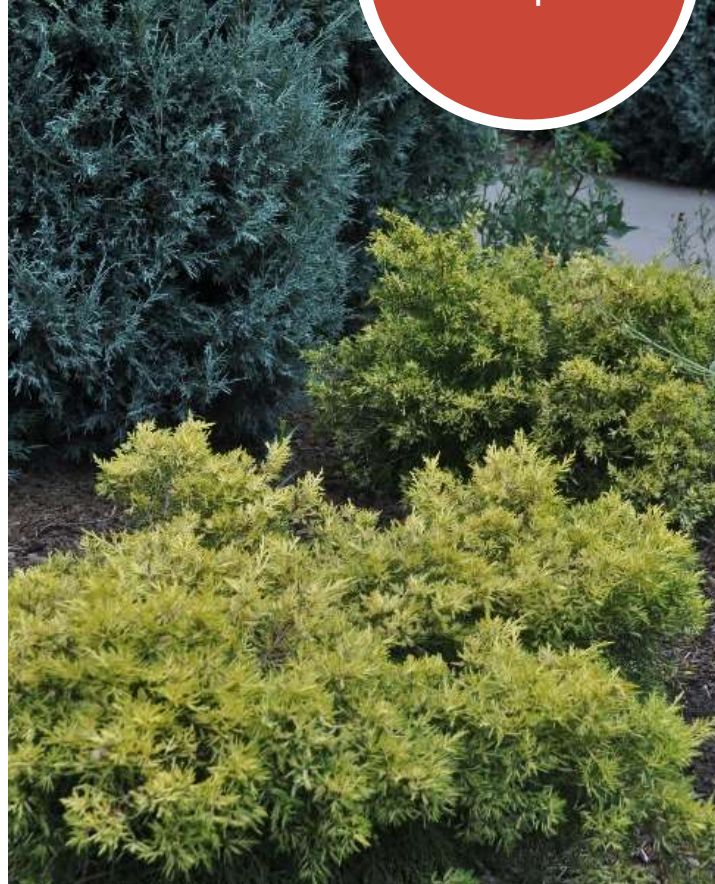
5
Planting
Beds

Use trees to provide shade for lawn, gathering areas, and activity zones



- Low-maintenance color
- Privacy
- Provide multi-season interest
- Backbone plant of any good design

'Sea of Gold'
Juniper



'Diablo'
Ninebark



Define Space

5 Planting Beds

Shrubs can be used to define a space by creating a living fence



Ornamental Grasses

5
Planting
Beds

- Provide movement and sound
- Add light and texture
- Provide winter interest
- Habitat for birds

Alkali
Sacaton



Flame
Grass



Create Privacy

5 Planting
Beds

Trees, shrubs, and ornamental grasses can be used to add height and create privacy



- Provide bursts of color
- Grow year after year
- Bloom at different times of the year
- Habitat for pollinators

Dianthus



Shasta Daisy



Planting in Layers

5
Planting
Beds



Annuals vs. Perennials

Best
Practice

Don't mix annuals
and perennials in
planting beds



Best
Practice



Save annual
flowers for
container accents

- Keeping annuals in containers will reduce maintenance
- Drip irrigate containers on their own zone

- The carpet of the landscape
- Living mulch
- No need to mow
- Outcompete most weeds

Creeping
Thyme Mix



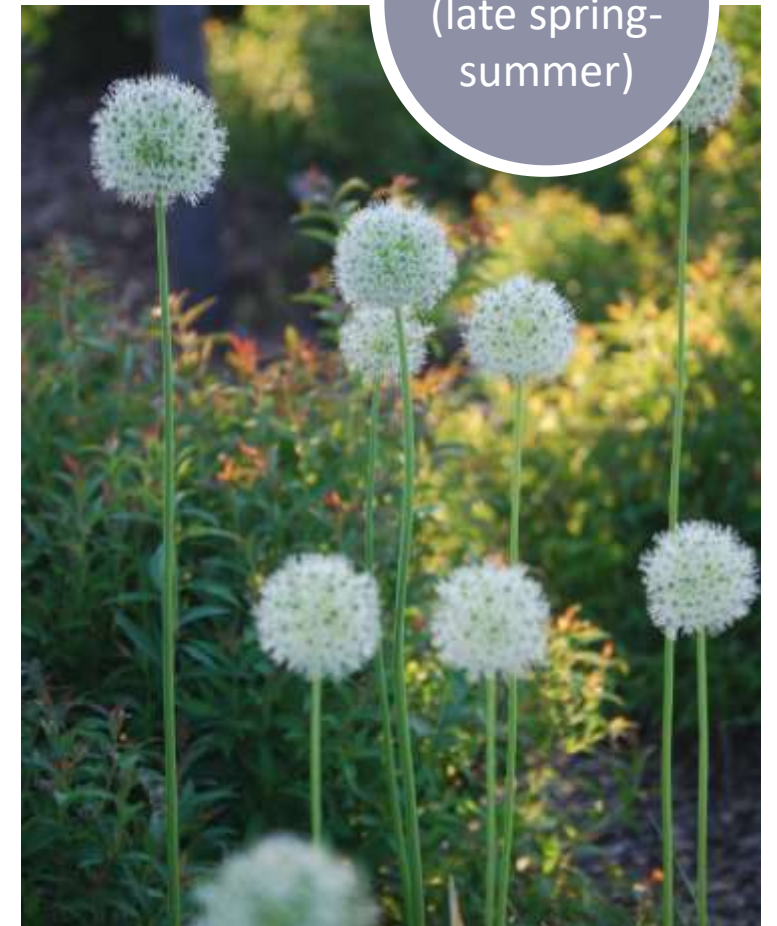
Plumbago



- Waterwise
- Provide early spring color
- A mix of bulbs provides color spring through fall
- Low maintenance



Tulips
(early spring)



Allium
(late spring-
summer)

Planting Times

Fall

- This is the best time to plant
- Smaller selection

Spring

- Also, a good time to plant
- Selection is much greater

Summer

- Not recommended; plants will struggle



Tree Planting

- Too high is better than too deep
- Don't cover the trunk flare
- Remove burlap and cage
- Staking is not always necessary



1. Call Before You Dig - Several days before planting, call the national 811 hotline to have underground utilities located.

2. Handle with Care - Always lift tree by the root ball. Keep roots moist until planting.

3. Digging a Proper Hole - Dig 2 to 5 times wider than the diameter of the root ball with sloping sides to allow for proper root growth.

4. Planting Depth - The trunk flare should sit slightly above ground level and the top-most roots should be buried 1 to 2 inches.

5. Filling the Hole - Backfill with native soil unless it's all clay. Tamp in soil gently to fill large air spaces.

6. Mulch - Allow 1 to 2 inch clearance between the trunk and the mulch. Mulch should be 2 to 3 inches deep.

For more tree-planting tips and information, visit arborday.org.

Source:  **Arbor Day Foundation**

90075201

Watering New Plants

New plants have small root balls and **need water several times a week** (or more!) during the first growing season.



Watering Established Plants

- Plants with an established root system should be watered using drip irrigation
- Drip Irrigation needs its own zone because it runs longer than overhead spray

Clay Soil:

Water once a week for 60 minutes

Sandy Soil:

Water two days a week for 30 minutes



Watering Guide

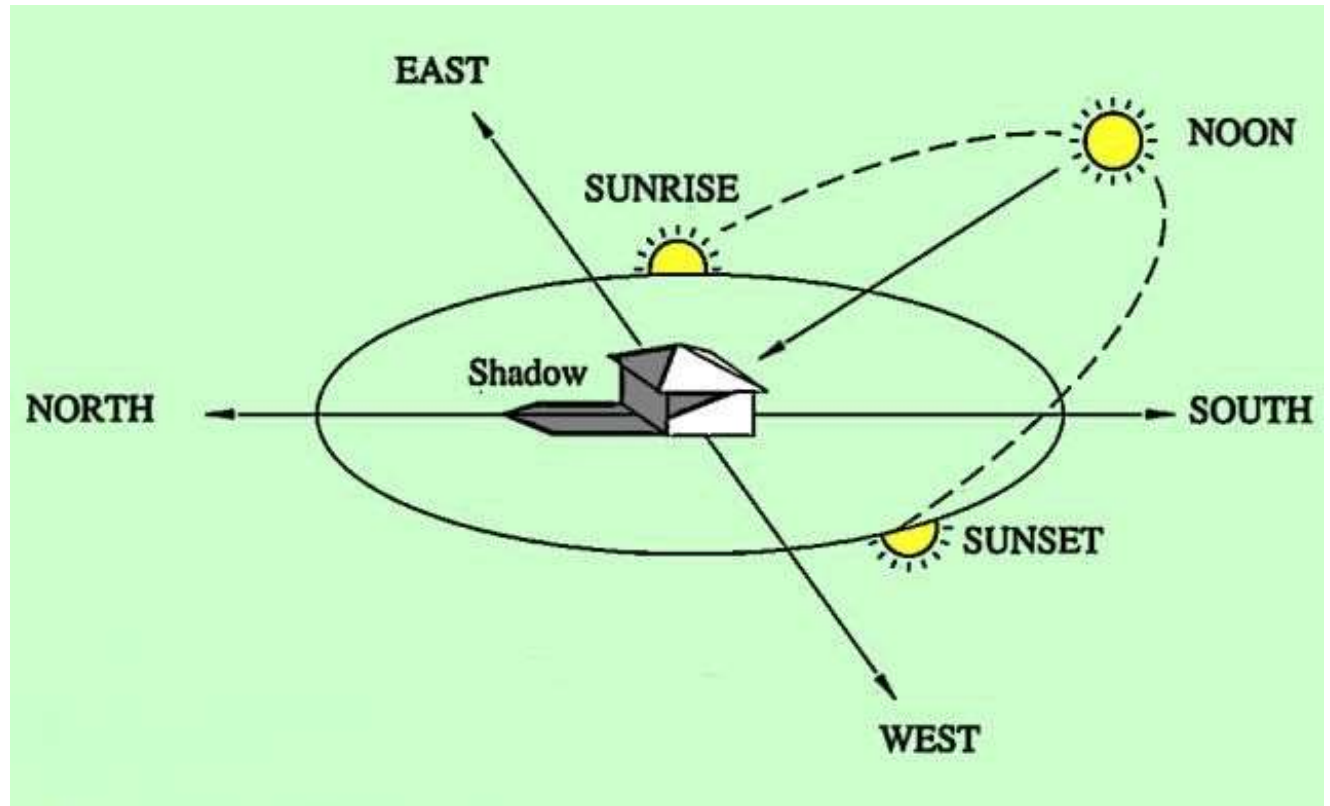
General Watering Guide for Central/Northern Utah

Lawns						Planting Beds						
How Often?	Clay Soil	Sandy Soil	How Long?	Clay Soil	Sandy Soil	When?	How Often?	Clay Soil	Sandy Soil	How Long?	Clay Soil	Sandy Soil
Mother's Day (start watering)	Once every 5 days	Once every 3 days	Rotating 	45 min. total	25 min. total	Before 8 am <i>OR</i> After 8 pm for both lawn and planting beds.	Mother's Day (start watering)	Once every 7 days	Once every 5 days	Drip (Recommended) 	60 minutes	30 minutes
Father's Day	Once every 3 days	Once every 2 days		Fixed 	25 min. total		15 min. total	Father's Day	Once every 4 days		Once every 3 days	If you currently have spray irrigation in your planter beds, we recommend switching to drip. Drip irrigation in planting beds dramatically reduces weeds while saving water.
Labor Day	Once every 5 days	Once every 3 days	Columbus Day					Once every 7 days	Once every 5 days			
Columbus Day	Stop Watering (winterize)		Use the "cycle and soak" method for lawn. Set each zone for half the time needed, run all zones, then run each station a second time. This minimizes water runoff.			Columbus Day	Stop Watering (winterize)					

Location Affects Plants

What is a microclimate?

- A microclimate is when the climate of a small area is different from the area around it
- Some areas of your yard may be warmer or colder, wetter or drier, or less prone to frosts
- Side yards and foundations create microclimates



Full sun plants:

Areas facing south and west are the best place for heat-loving plants.

Hardscape and walls retain and reflect heat



Partial Sun

5 Planting Beds

Partial sun plants:

- Require 6 hours of sun or less
- The east side is a great place for these plants
- There is sunlight for half of the day, but the sun is far less intense

Morning Sun is less intense



Shade

5
Planting
Beds



Step Three-Mulch

5 Planting Beds



Mulch Materials



Localscapes Requirement

- There should be 3-4" of mulch in the Planting Beds



Completed Planting Beds





Localscapes University

Resources





Localscapes Requirements



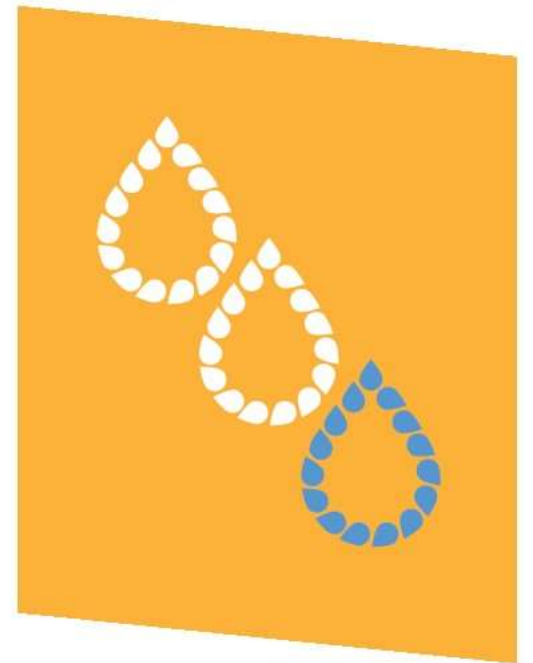
- The project is oriented around a Central Open Shape of lawn, gravel, hardscape or groundcover that has a defined edge and creates contrast with the surrounding landscape.
- The Central Open Shape is at least 8 feet wide at its narrowest point.
- The Central Open Shape is not obstructed by trees, posts, playsets, planting beds, or other elements.
- If lawn is used for the Central Open Shape, it does not exceed 35% of the total landscaped area.
- Lawn is not used anywhere outside of the Central Open Shape.
- Planting Beds are drip irrigated and have 35% plant coverage at least 3-4 inches of mulch.



Utah Water Savers

- Your one stop shop for all water conservation rebate and incentive programs in the State of Utah
- www.utahwatersavers.com

Utah Water Savers





Join the Work Group!

- Ask questions
- Share photos
- Get advice!



Localscapes Work Group

Closed group

About

Discussion

Learning

Chats

Members

Events

Videos

Photos

Files

Group Insights

Recommendations

Moderate Group

Search this group

Localscapes Work Group

Ideas, inspiration, support and education for homeowners applying the Localscapes method to transform their yards.

Localscapes

Landscape for where you live.

Experience the benefits of a yard designed specifically for Utah.

Joined Notifications Share More

Write Post Add Photo/Video Live Video More

Write something...

Photo/Video Watch Party Tag Friends

GROUP BY Localscapes 5,910 like this

LEARNING 0 of 0 required units completed

Go to Learning Tab



Need more help?
Contact us at
info@localscapes.com





Questions?



WEBER BASIN WATER
**LEARNING
GARDEN**

Class Feedback



Monthly Newsletter

