



SHADE GARDENING

You can make shade a beautiful part of your Landscape!



FIRST STEP- ASSESS THE SHADE

- Where are the shady areas in your yard?
- What time of day are they shaded?
- How long are they shaded?
- How big are the shaded areas?
- What is creating the shade?



A lush garden scene featuring a stone patio with a pergola, a large tree, and various plants. The patio is made of irregular stone tiles set in a grid pattern. A wooden pergola with a lattice top stands on the patio. A large, mature tree with a thick trunk is on the right. In the background, there are white garden chairs and a wooden fence. The foreground is filled with green plants, including hostas and yellow flowers.

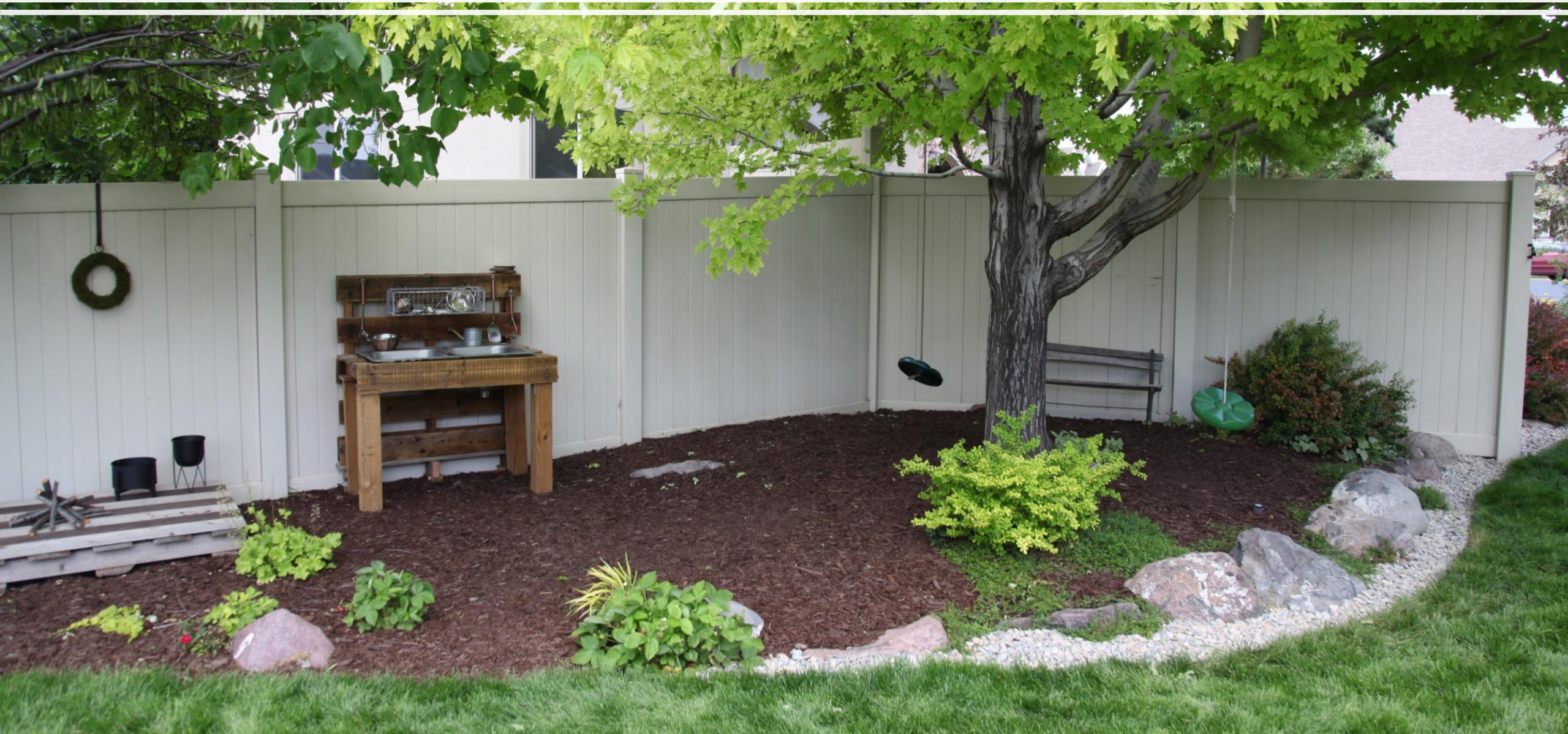
FRONT AND BACK YARDS

HOW WOULD YOU LIKE TO USE YOUR FRONT AND/OR BACK YARD?

- Gathering areas
 - Seating areas
 - Outdoor rooms
 - Fire Pit
 - Informal Seating
- Activity Zones
 - Children's play areas
 - Storage
 - Hot tub area
 - Sports Court
 - Trampoline



FRONT AND BACK YARD IDEAS



FRONT AND BACK YARD IDEAS



FRONT AND BACK YARD IDEAS



FRONT AND BACK YARD IDEAS




FRONT AND BACK YARD IDEAS



FRONT AND BACK YARD IDEAS



A side yard garden featuring a wooden fence on the left, a stone path leading through the yard, and various plants including purple flowers, a blue pine branch, and a large bush with purple leaves. The scene is brightly lit with shadows cast on the fence and path.

SIDE YARDS
IDEAS

SIDE YARDS
IDEAS




SIDE YARDS
IDEAS




SIDE YARDS
IDEAS



A photograph of a modern side yard. A grey fence with a stone-textured base runs along the right side. A concrete path leads from the foreground towards a gate in the fence. The yard is landscaped with various plants, including a large green hosta in the foreground and a small tree in the background. A white circular graphic with the text "SIDE YARDS IDEAS" is overlaid on the left side of the image.

SIDE YARDS
IDEAS



SIDE YARDS
IDEAS



Physocarpus opulifolius 'Dart's Gold': Darts Gold Ninebark



Dicentra spectabilis: Bleeding Heart



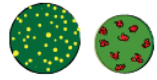
Hosta species: Large Hosta



Hosta species: Small Variegated Hosta



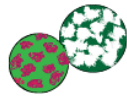
Huechera species



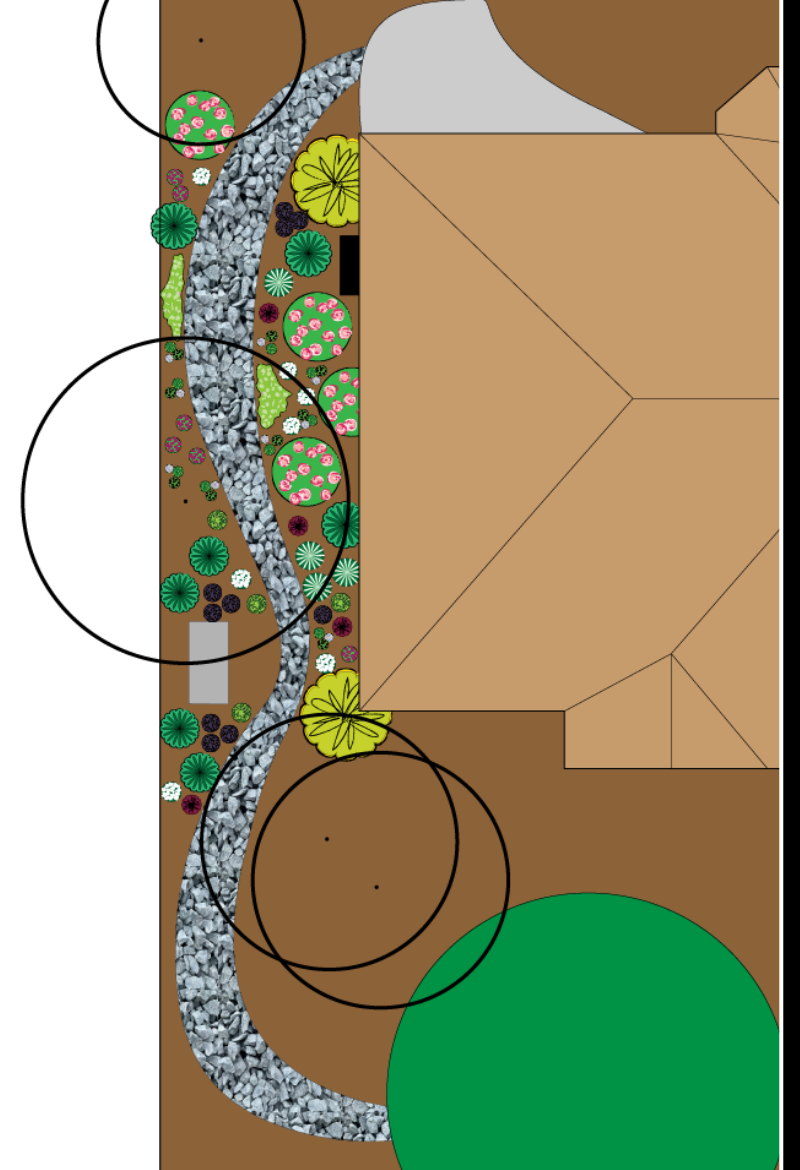
Columbine Species



Astible Species



Lamium



DESIGN EXAMPLE



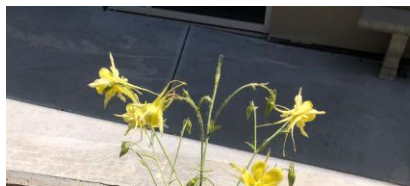
BLEEDING HEART



HEUCHERA



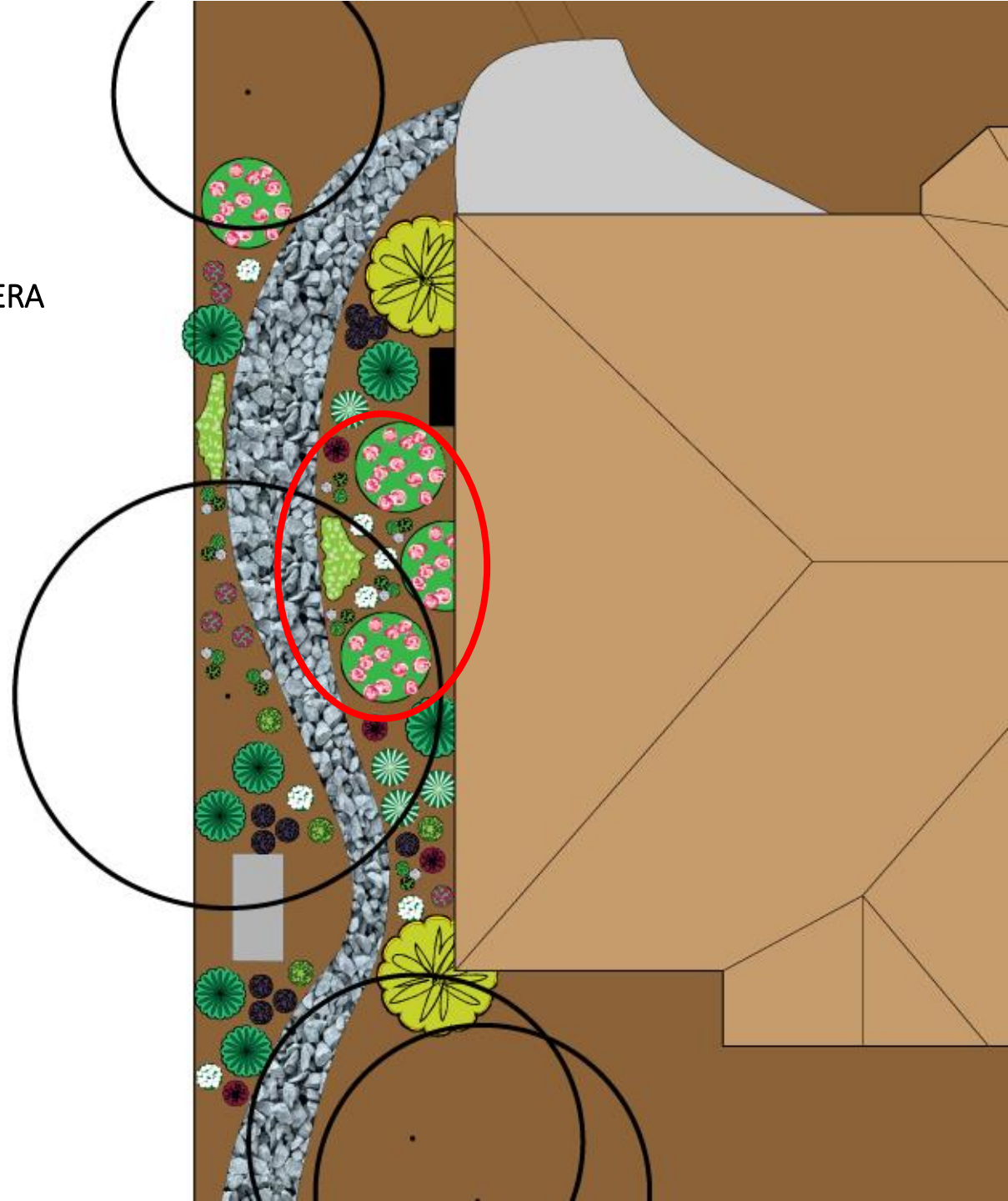
ASTIBLE



COLUMBINE



DEAD NETTLE

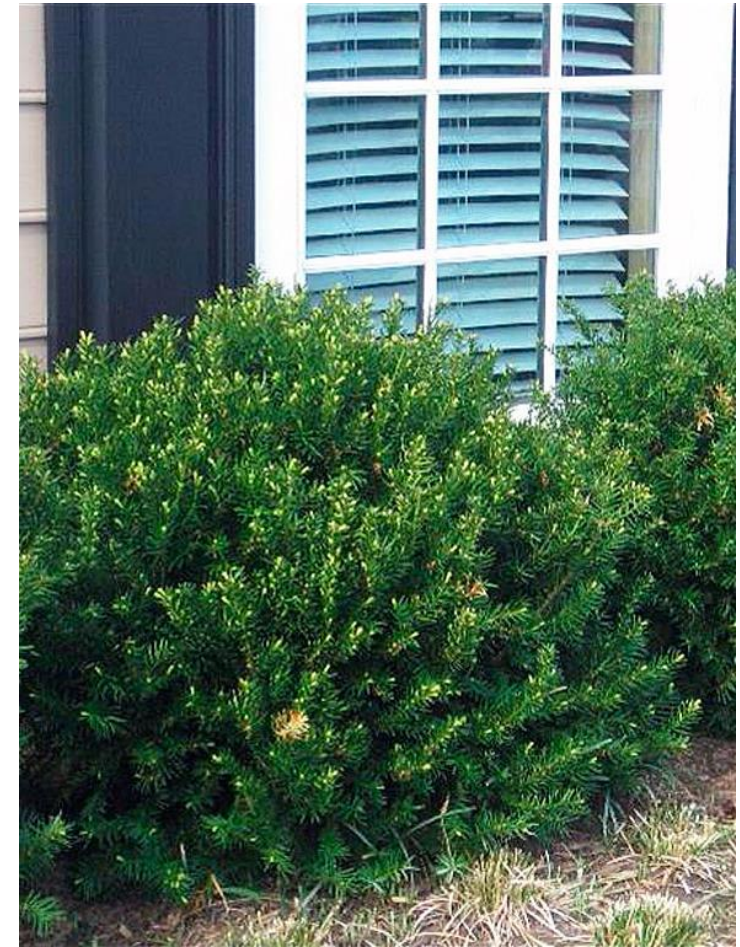




SHRUBS



YEW
'Taxus'



JAPANESE
KERRIA
'Kerria'

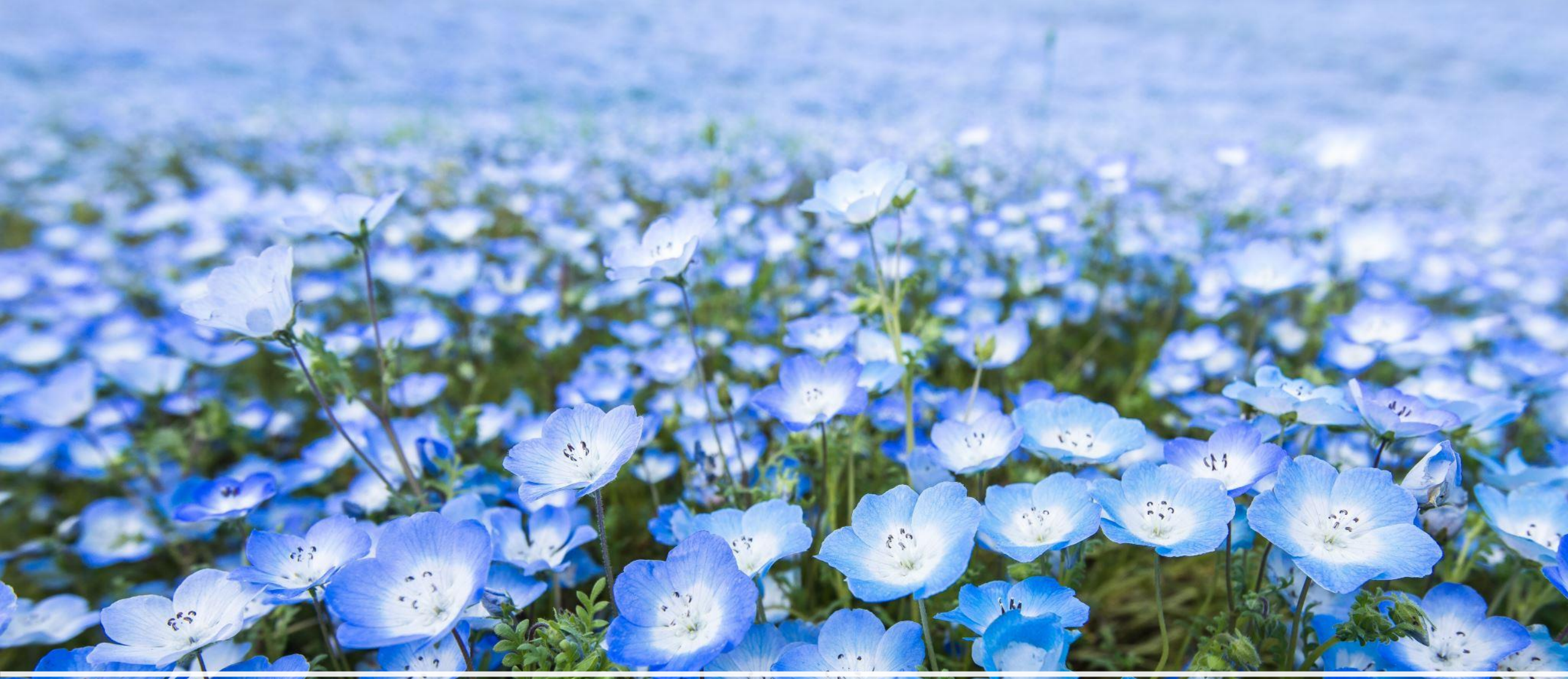


NINEBARK
'Physocarpus'



FRASER'S
PHOTINIA
'Photinia'



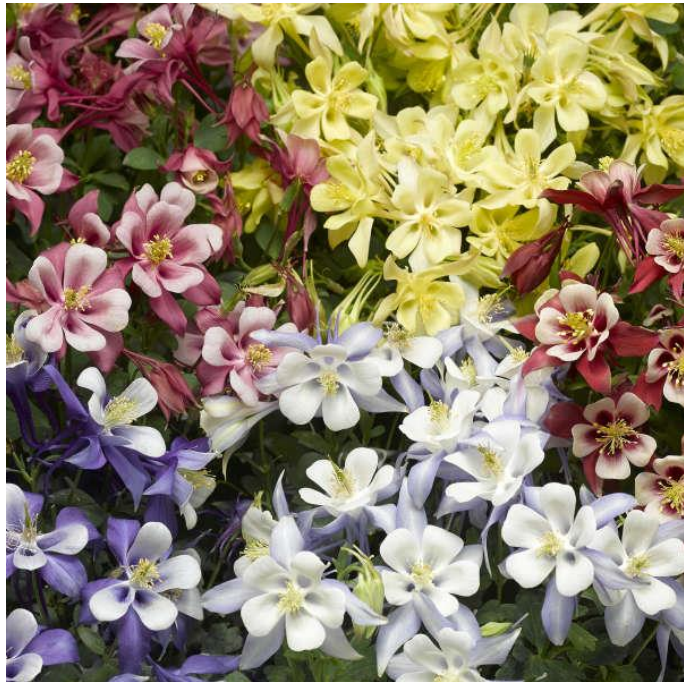


FLOWERS

BLEEDING
HEART
'Dicentra'



COLUMBINE
'Aquilegia'



HOSTA
'Hosta'



CORAL BELLS
'Heuchera'



ASTILBE/
FALSE
SPIREA



BRUNNERA
'Brunnera'



FERN
'Athyrium'



LEOPARD
PLANTS
'Ligularia'



HARDY
GERANIUM
'Geranium'





GROUNDCOVERS



DEAD
NETTLE
'Lamium'



PLUMBAGO
'Ceratostigma'



HARDY
MANZANITA
'Arctostaphylos'



SEDGE
'Carex'

